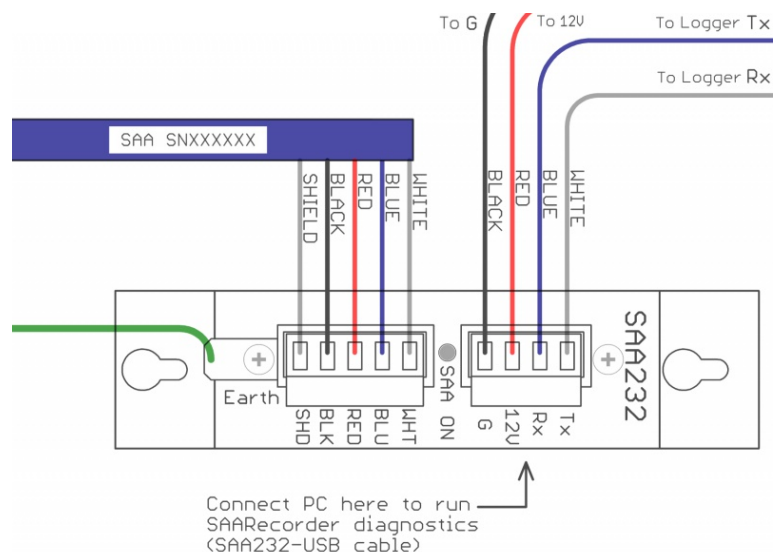


Long Term Data Collection Quick Start Guide

These quick start instructions provide a summary of the steps required to setup long term data collection with a Campbell Scientific data logger. Comprehensive instructions are available in the online manual: <http://saaf.meurand.com/loggernet>

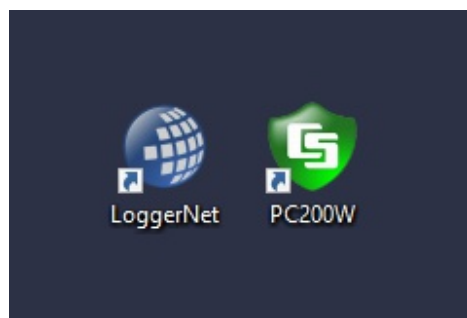
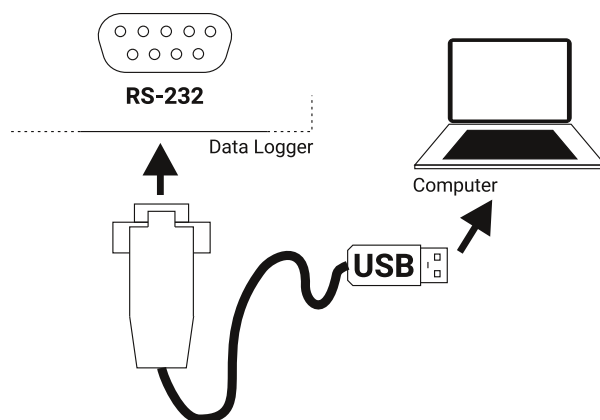


1. Physically connect the ShapeArray to an SAA232(-5). Connect the SAA232(-5) to a Campbell Scientific data logger.

- White wire: SAA232(-5) **Tx** to data logger COM port **Rx**
- Blue wire: SAA232(-5) **Rx** to data logger COM port **Tx**
- Red wire: SAA232(-5) 12V to 12V power supply
- Black wire: SAA232(-5) ground (G) to ground (G)

WARNING: Do not connect the red and black wires to the logger's 12V or switched 12V (SW12V) power and ground.

2. Connect your computer to the data logger using the Logger-PC cable.



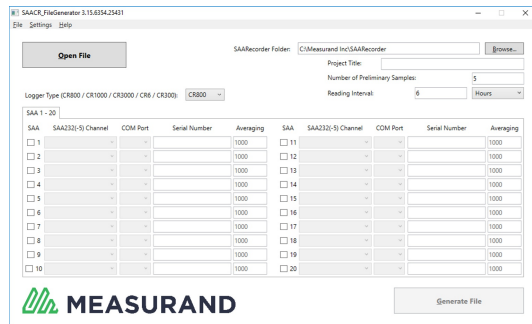
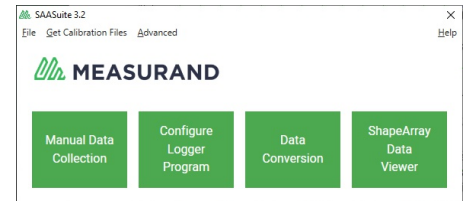
3. Install Campbell Scientific software for logger configuration and communication. LoggerNet or PC200W can be used for this purpose. PC200W is free software from Campbell Scientific but has limited functionality compared to LoggerNet.

<https://www.campbellsci.ca/pc200w>

4. Download and install Measurand's SAASuite.

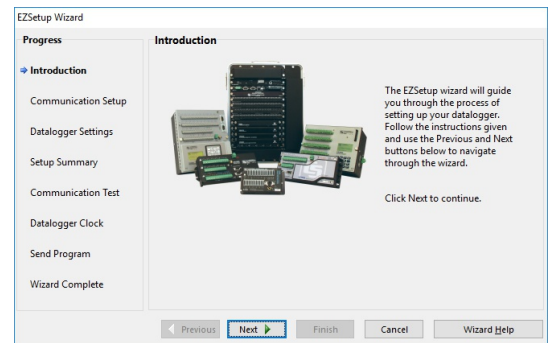
<http://measurand.com/?/products/category/software>

Install at least the following packages: SAARecorder, SAAView, Raw2Data, FileGenerator, and Calibration Files (downloaded through SAASuite after installation).



5. Start SAACR_FileGenerator and configure the following fields: **Project Title**, **Number of Preliminary Samples**, **Reading Interval**, **Logger Type**, **232(-5) Channel**, **COM Port**, **Serial Number**, and **Averaging**. Click the **Generate File** button and provide a name for the program file.

6. Start LoggerNet or PC200W and setup a connection to the logger using the EZSetup Wizard. This can be done from LoggerNet Setup or the main PC200W window by clicking the **Add Datalogger (+)** button in the toolbar. Step through the wizard to configure communication with the logger and send the program file just created to the logger.



7. Configure the project folder path where data will be stored when it is collected from the logger. This can be done in **Data Files** page of the **EZSetup** wizard in LoggerNet's Setup application or from the **Collect Data** tab in PC200W's main window.

8. Collect the data from the data logger. This can be done by clicking the **Collect Now** button in the LoggerNet Connect application. In PC200W, select the **Collect Data** tab in the main window and click the **Start Data Collection** button.

More detailed information about ShapeArray and other Measurand products is available in our Support portal knowledge base and online manuals at the following URLs:

<https://support.measurand.com>

<http://manuals.measurand.com>

