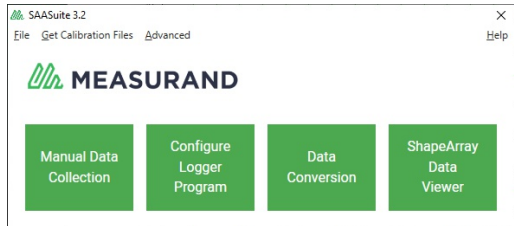


ShapeArray Demo Quick Start Guide

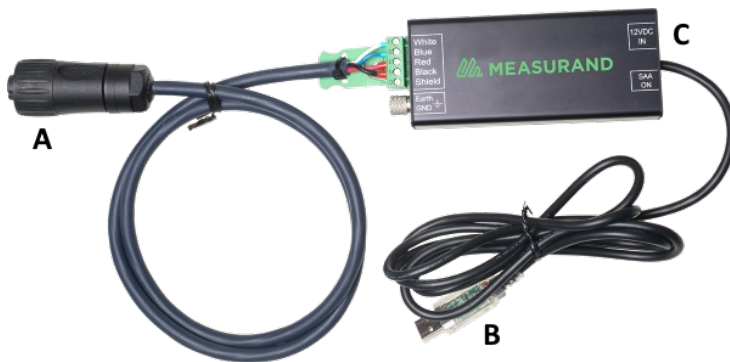
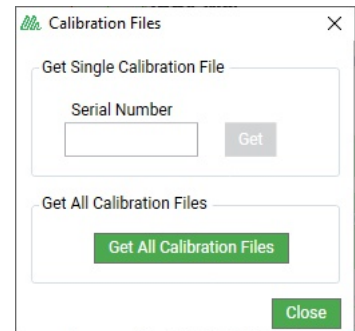
These instructions provide a summary of the steps required to get started with your SAAV demonstration instrument. Comprehensive instructions for working with SAAV are available in the SAAV Manual: <http://saav.measurand.com/home>



1. Download and install the SAASuite software. From the SAASuite application, you can download, install, and update Measurand's software applications, utilities, and calibration files. This software can be obtained for free at the following URL:

<http://measurand.com/?/products/category/software>

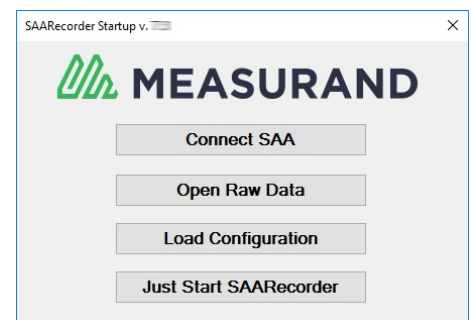
2. Open SAASuite and click the **Get Calibration Files** menu option and then the **Get All Calibration Files** button.

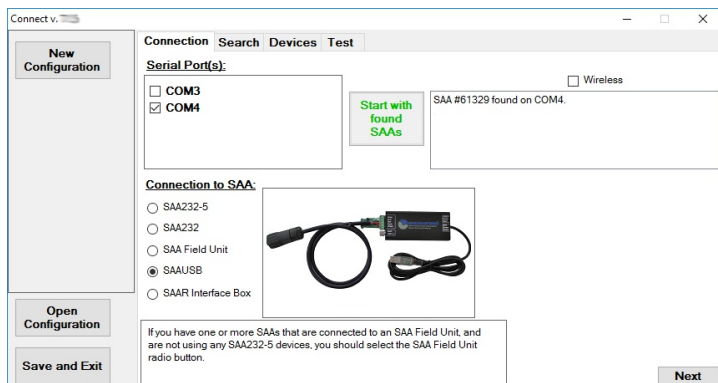


3. Make the following connections in order:

- Connect the Amphenol connector (A) to the ShapeArray
- Connect the USB connector (B) to the computer
- Connect the included power supply to the SAAUSB (C) and plug it into an AC power source

4. Start SAASuite and click the **Manual Data Collection** button to launch the **SAASRecorder** application. Click the **Connect SAA** button in the resulting dialog.





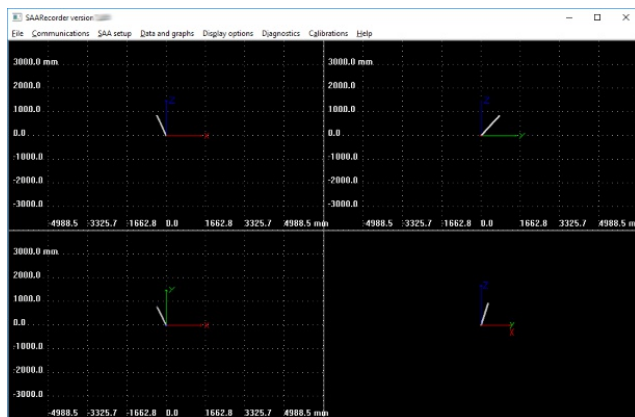
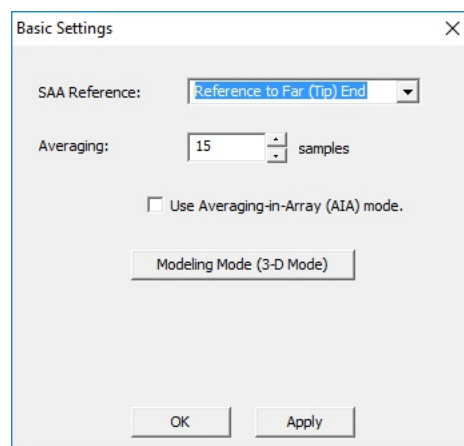
5. In the **Connect** window, on the **Connection** tab, ensure that the following are selected:

- The **COM** ports in the **Serial Port(s)** section
- The **SAAUSB** option in the **Connection to SAA** section.

After a short wait, the **Start with found SAAs** button and the serial number of the ShapeArray will appear. Click this button to continue.

6. Wait a few moments for SAARecorder to initialize communication with the ShapeArray. Once communication is established, configure the **Basic Settings** and click the **OK** button. For real-time demonstration purposes, Measurand recommends the following settings.

- **SAA Reference:** Reference to Far (Tip) End
- **Averaging:** 15 samples
- **Use Averaging-in-Array (AIA) mode:** deselected
- **Modeling Mode:** 3-D for vertical demonstrations or 2-D for horizontal demonstrations



7. With your basic settings configured, the SAARecorder window will display the shape of your ShapeArray in near real-time.

We hope you enjoy experience with the ShapeArray and should you have any questions or concerns, please, feel free to contact Measurand directly for support.

Email: support@measurand.com
Phone: +1 (506) 462-9119

More detailed information about ShapeArrays and other Measurand products is available in our Support portal knowledge base and online manuals at the following URLs:

<https://support.measurand.com>

<http://manuals.measurand.com>

