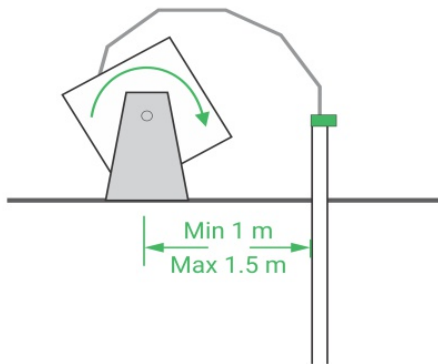


SAAV Quick Start Guide

These instructions provide a summary of the steps required to properly install an SAAV in 70 mm OD or 85 mm OD standard inclinometer casings. Comprehensive installation instructions are available in the SAAV Manual: <http://saav.measurand.com/home>

1. Place the SAAV Casing Cap onto the inclinometer casing. Remove the screws and top cover from the Casing Cap. Remove the Extension Tube Anchor from inside the Casing Cap.

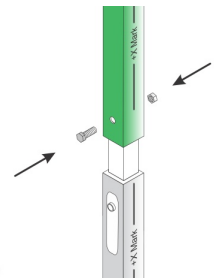


2. Place the SAAV on the reel approximately 1 m - 1.5 m (3' to 5') away from the borehole. Ensure the reel is placed such that the SAAV will come off of the reel from the top and the reel is oriented along the expected direction of movement.

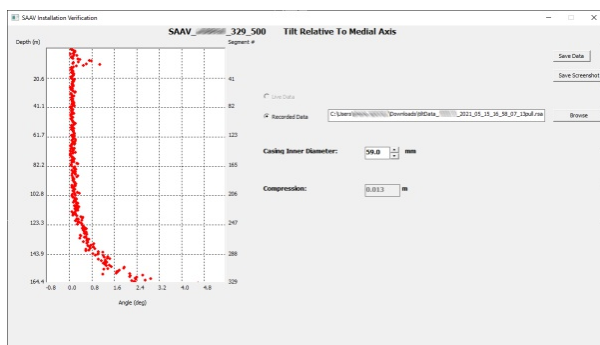
Insert the SAAV into the borehole.

3. Remove one of the 1 m Extension Tubes from the reel and connect it to the Spring Box, as shown.

WARNING: Ensure that the Extension Tube is attached to the Springbox assembly such that the X-mark on the tubing aligns with the X-mark on the Springbox.



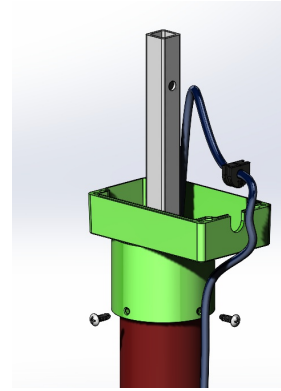
If the second Extension Tube is required, use the Extension Coupler provided in the SAAV Installation Kit to connect the tubes together.



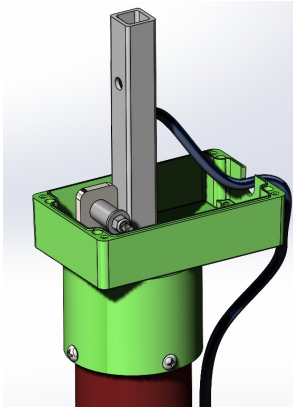
4. Use the **SAAV Installation Verification** tool from the **Diagnostics** menu in **SAAREcorder**. Lift the SAAV until it is hanging in the casing with one segment on the bottom. The angle reported by the tool will be around 4° to 6°. The tilts of the segments above the last segment should be close to 0°. Drop the SAAV straight into the casing. Apply approximately 5 lbs of downward pressure to compress it. Record the value for **Compression** reported in the tool and collect sample data. Repeat lifting and dropping until three sequential readings of **Compression** do not change by more than 1 mm (approximately 10 to 15 repetitions).

Measure and record the azimuth offset of the SAAV using the included X-Mark Protractor.

5. Rotate the Casing Cap so that the Extension Tube Anchor, when screwed into place, is directly above the Extension Tube. The Anchor should be as level as possible when making the connection to Casing Cap assembly. The Casing Cap must be positioned so that the collar screws are not aligned with any grooves in the casing.



Drill holes for screws using a 13/64" or 5.10 mm drill bit. Secure the Casing Cap to the inclinometer casing using the four self-tapping screws included with the SAAV Installation Kit.



6. Set the Extension Tube Anchor on its short edge inside the Casing Cap. Apply a light amount of force on the Extension Tube (approximately 5 kg), mark a line across the top of the Extension Tube Anchor on the Extension Tube and cut along the marked line.

WARNING: Ensure proper personal protection equipment (PPE) is worn, including goggles and face mask, to protect from fibreglass dust. See <http://saav.measurand.com/safety-considerations> for a full description of PPE.

7. Insert the Extension Tube Anchor into the top of the Extension Tube and compress the Extension Tube until you can secure the bolt into place. Tighten the bolt until the Extension Tube Anchor makes contact with the bottom plate or until the Extension Tube Anchor can no longer be moved.

WARNING: Do not use power tools to secure the bolt. This can damage the threads and/or the plate.

Insert the cable into the grommet. Before inserting the grommet into place, make sure there is a loop of cable of approximately 15 cm to 20 cm (6" to 8") long in the enclosure for strain relief. Insert the grommet into the cut out section of the enclosure.

Place cover on the top of Casing Cap and secure it with screws in each of the four corners. Tighten the nut on the cable gland on the outside of the Casing Cap.

More detailed information about SAAV and other Measurand products is available in our Support portal knowledge base and online manuals at the following URLs:

<https://support.measurand.com>

<http://manuals.measurand.com>

